

Working with the Mn/DOT Geodetic Feature Service in ArcMap

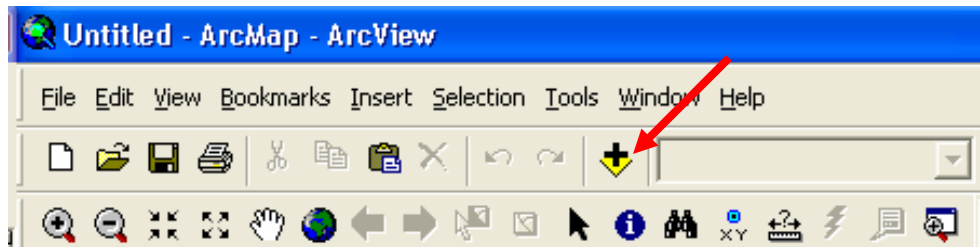
If you have access to ArcGIS Desktop you have the ability to download geodetic monument data by adding the geodetic feature service as outlined in this document.

Step 1:

Open ArcMap.

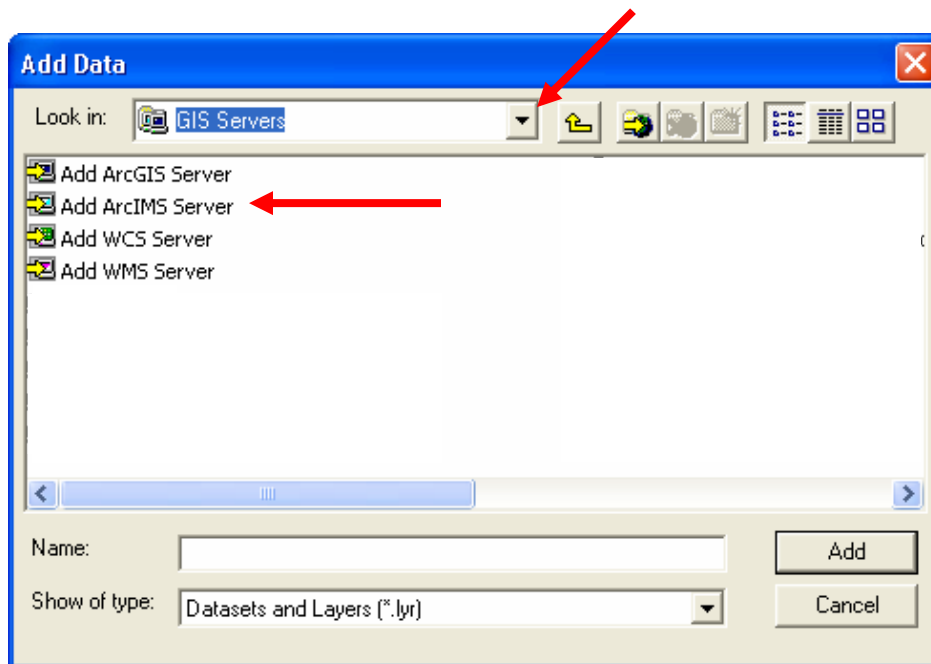
Step 2:

Click on the “add data” button



Step 3:

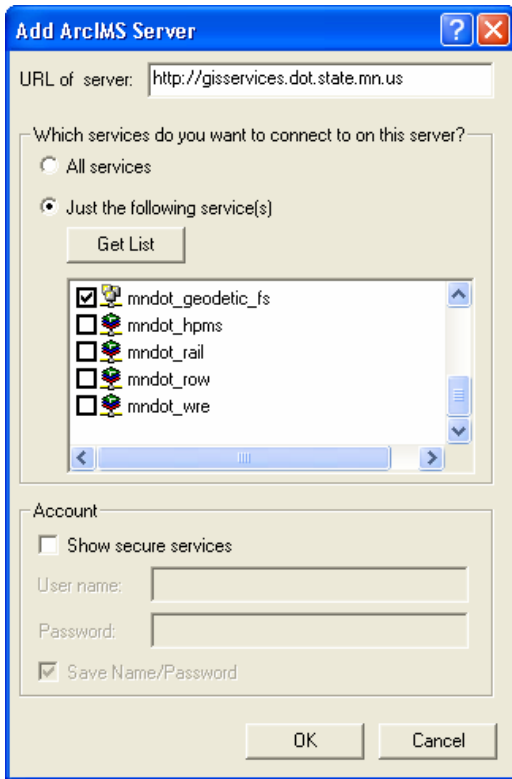
Select “GIS Servers” in the *Look in:* dropdown box.
Then double-click “Add ArcIMS Server.”



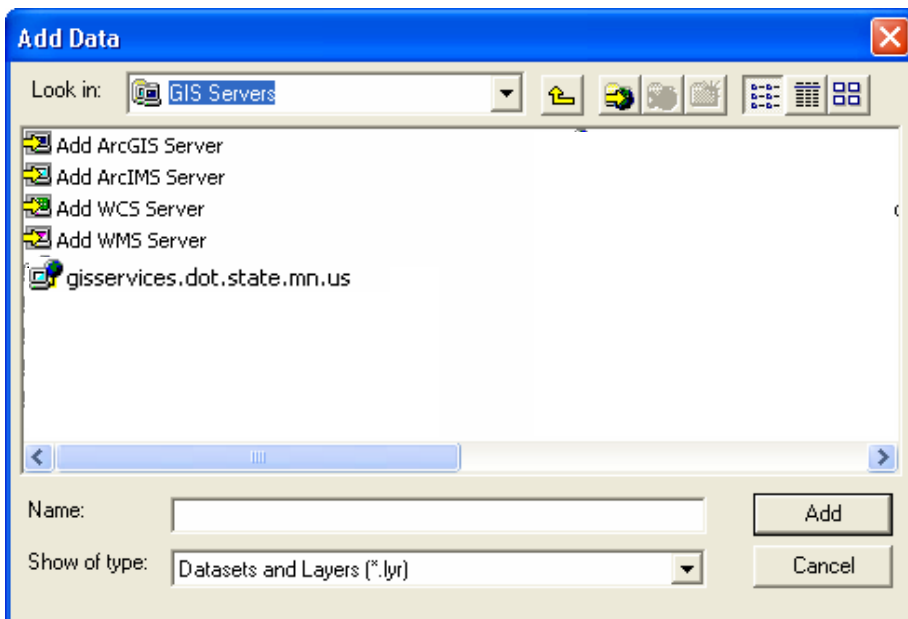
Step 4:

Make sure the URL is the following:

<http://gisservices.dot.state.mn.us> Select “Just the following services” and check *mndot_geodetic_fs*.

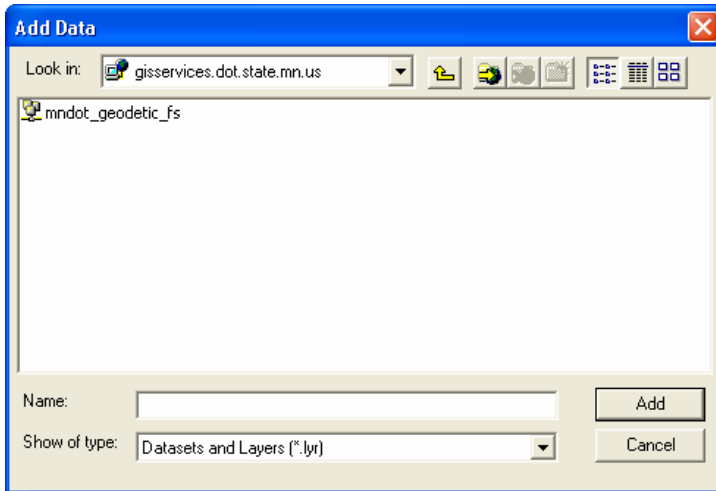


The Add ArcIMS Server screen will disappear and you will be back to the *Add Data* page. You will now have a listing under *Services* called “gisservices.dot.state.mn.us.” (You can rename this in ArcCatalog if you want. You could have also added this connection through ArcCatalog prior to accessing the feature service in ArcMap.)

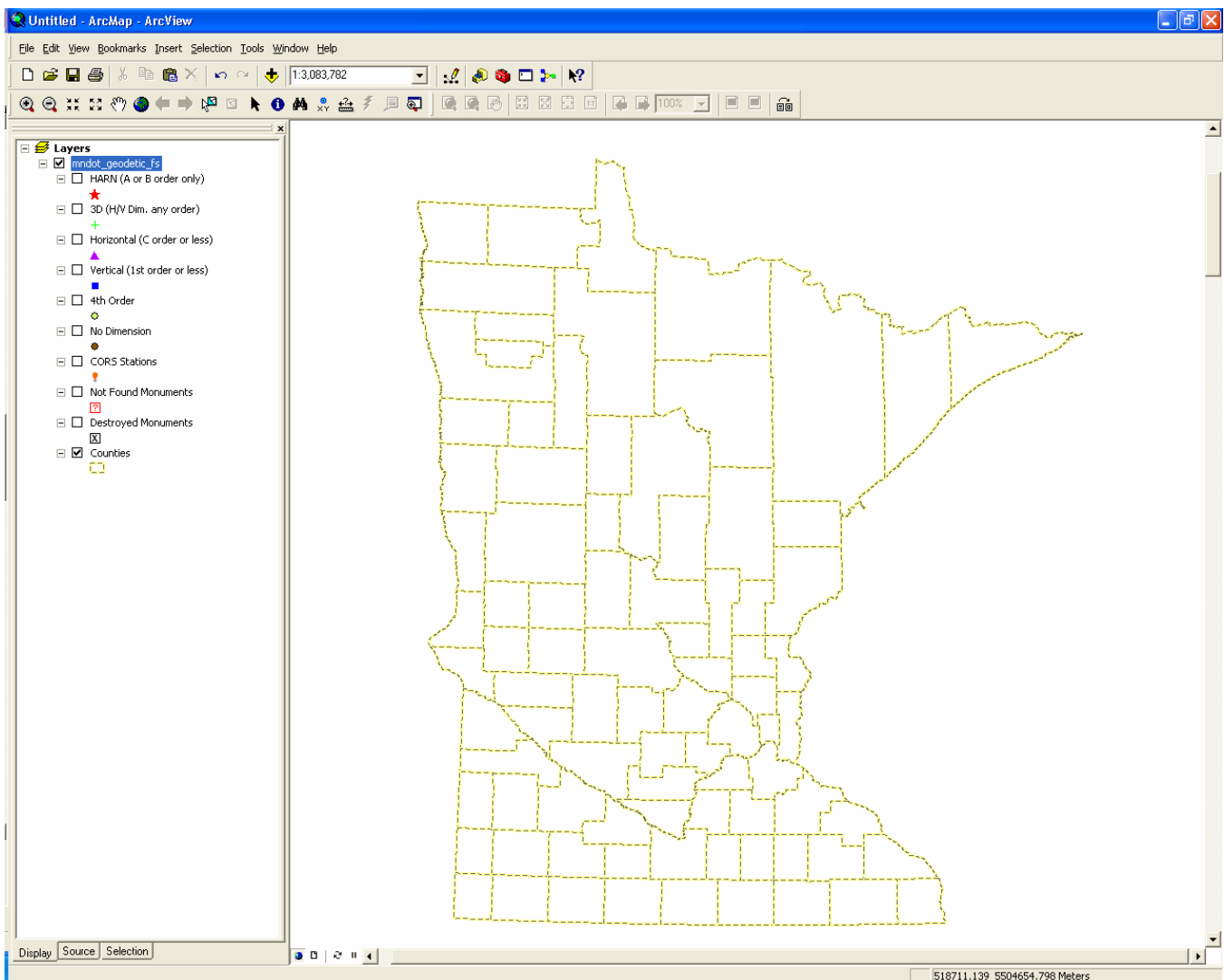


Step 5:

Double-click on *gisservices.dot.state.mn.us*. Select *mindot_geodetic_fs* and click “Add.”



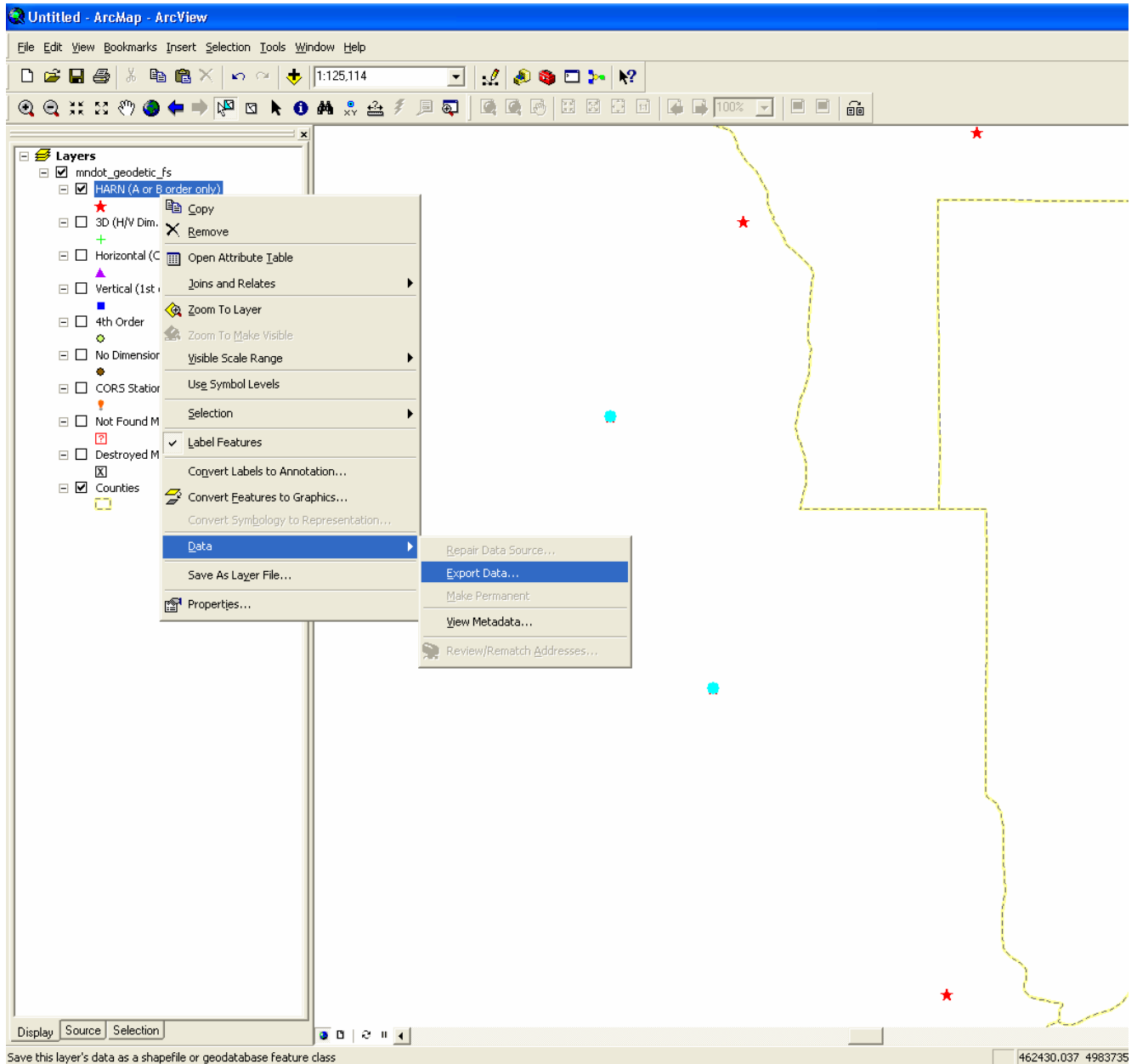
The feature service should now be added to your ArcMap session.

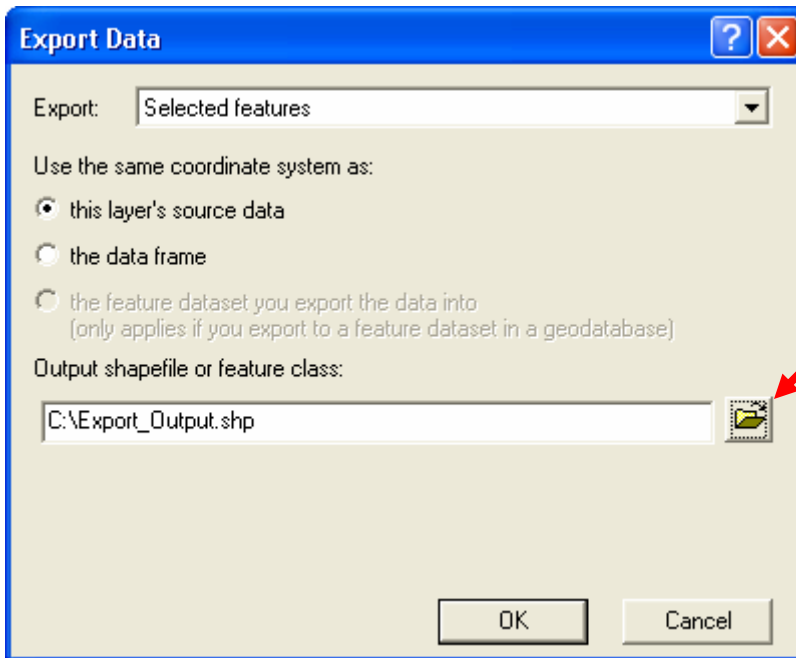


Using any of the tools within ArcMap the user is now able to zoom, pan, query, select, etc. any combination of features from the layers within the feature service. Once features are selected, they may be exported and downloaded.

Step 6:

Select features from a layer. Right-click that layer and go to *Data...Export Data*

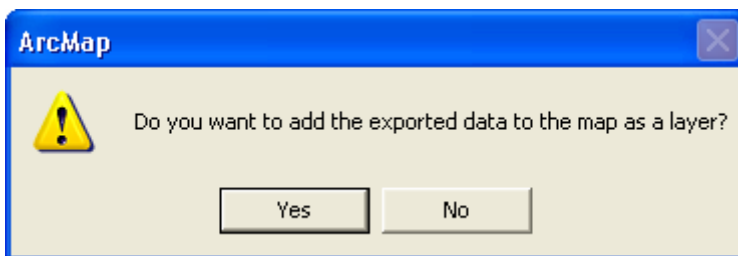




If you would like to change the filename and path or would like to export a feature class instead of a shapefile click on the folder icon to make changes.

Step 8:

Click “OK” after selecting the appropriate parameters. You now have exported data for your own personal use in ArcGIS. You are also prompted to add the exported data to your ArcMap session.



Remember: Mn/DOT geodetic monument data is updated daily so any data that is downloaded has the potential to become outdated very quickly.

The mndot_geodetic image service can also be added to an ArcMap session from the same gisservices URL. This service will not allow downloading of the data but you can work with the data within ArcMap and the data will always be current when it is added to an ArcMap session.

If you have specific questions about downloading geodetic monument data through this feature service please contact Ben Butzow at the Minnesota Department of Transportation. (Benjamin.Butzow@dot.state.mn.us) phone: 651.366.3455